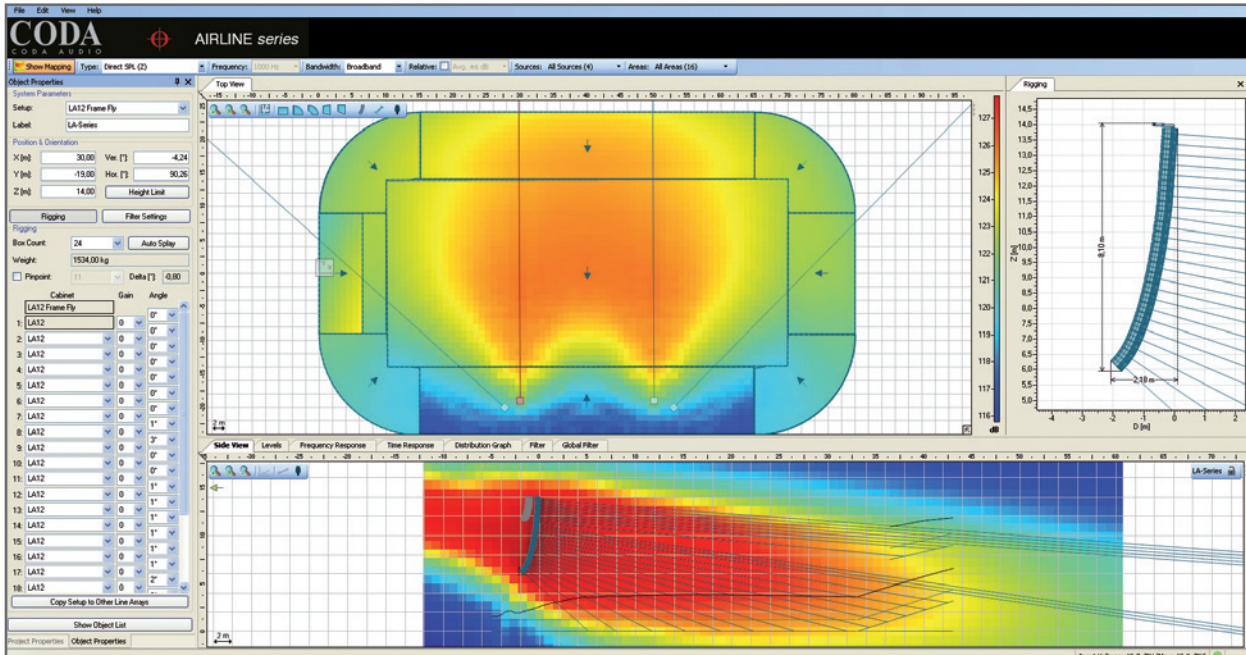


Coda EASE Focus II Software



Coda EASE Focus II Software

- 3D modeling of direct sound, displayed in horizontal and vertical cutting planes
- Full support for EASE GLL files and data exchange with EASE
- Capability to use multiple line array systems in a single project
- Virtual equalizer for tuning a line array in the simulation
- Support for digitally steered columns and other configurable loudspeakers; this requires an additional proprietary DLL that can provide e.g. beam steering filters
- Full frequency range from 20 Hz to 20 kHz
- High accuracy due to high internal data resolution and GLL data format
- Support for multiple languages: German, English, Spanish, Italian, Portuguese

Coda Audio EASE Focus II is a three-dimensional, acoustic simulation software for the configuration and modeling of line array systems and of adjustable loudspeakers, such as digitally steered columns. EASE Focus II is free for the end user.

In EASE Focus II, each line array or column loudspeaker is described by a so-called system definition which contains the mechanical, electronic and acoustic properties of the loudspeaker system. All available GLL-files for Coda Audio speakers can be downloaded from our website.

Great efforts have been made to keep EASE Focus II intuitive and easy-to-use while introducing three-dimensional coordinates and many new features. It can be considered a tool for both the end user, who needs to set up the sound system for a show, as well as for the R&D engineer, who is interested in the acoustic qualities of the array design. EASE Focus II is the optimal tool for easy and quick prediction of the sound system performance in a given venue. Compared to conventional aiming software the applicability of EASE Focus II is much larger. It is not fixed to a single loudspeaker product.